

# Current challenges and Strategies in Seafood Safety in Seychelles

Karl Seraphine

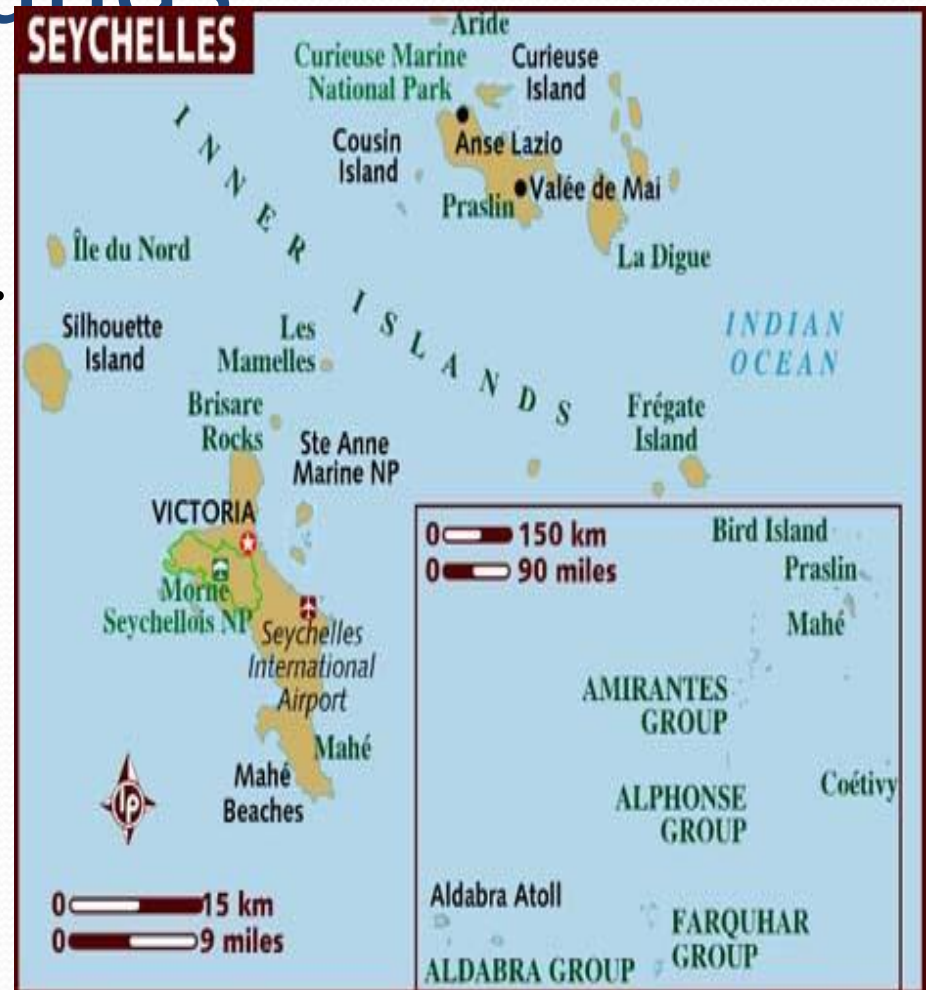
Seychelles Bureau of Standards –  
September 2017

# Outline of presentation

- Introduction
- Export of Fish and Fishery Products Seychelles
- Legislative structure
- Structure of the CA
- Main challenges in seafood safety
- Strategies to address challenges

# The Seychelles Islands

- Seychelles is a Small Island Developing State (SID) in the Indian Ocean.
- Consists of 115 islands with a population of 90,000 (2012)
- Upper middle income country with a GNP per capita of > US \$ 10,000 (2011)





## Production of Fish and Fishery products

- Seychelles list of approved establishments: 1 tuna cannery, 5 fresh and frozen, 1 fish oil plant, 1 fishmeal plant and 13 tuna freezer vessel.
- Canned tuna in oil and brine consist more than 65% in volume of fishery products exported.
- Brine frozen tuna round represent 25%
- Crude fish oil (extraction from tuna head and from fishmeal production).
- Artisanal sector dominated by bottom fishing – annual catch 3000 – 4000 tons yearly , over 100 artisanal vessels registered.
- Semi industrial sector over 30 small long liners targeting tuna and swordfish with by-catch such as marlin, sailfish, common dolphin fish, etc.

# Export of Fish and Fishery Products - Seychelles – 2013-15

## 1. Canned tuna (metric tonnes)

- 2013- 55,658.15
- 2014 – 46,136.44
- 2015 - 43,850.42 (-5% of 2014)



## Fishmeal (metric tonnes)

- 2013 – 6278.74
- 2014 – 5646.53
- 2015 - 6267.81

Major markets – Sri Lanka, Japan, Australia and Ghana

## Fish Oil (black oil)

- 2013 – 672.64 mt
- 2014 – 336.40 mt
- 2015 – 521.64 mt

Major markets: Iceland  
and Malaysia

## Fish Oil (white oil)

- 2013 – 377,40 mt
- 2014 – 289.00 mt
- 2015 – 279.60 mt

Major markets;  
Switzerland and  
Netherlands



# Fresh Fish (metric tonnes)

- 2013 – 13.431
- 2014 – 32.615
- 2015 – 97.553

Major markets – UK, France, Russia and Mauritius



# Frozen By Catch (metric tonnes)

- 2015 – 1575.45

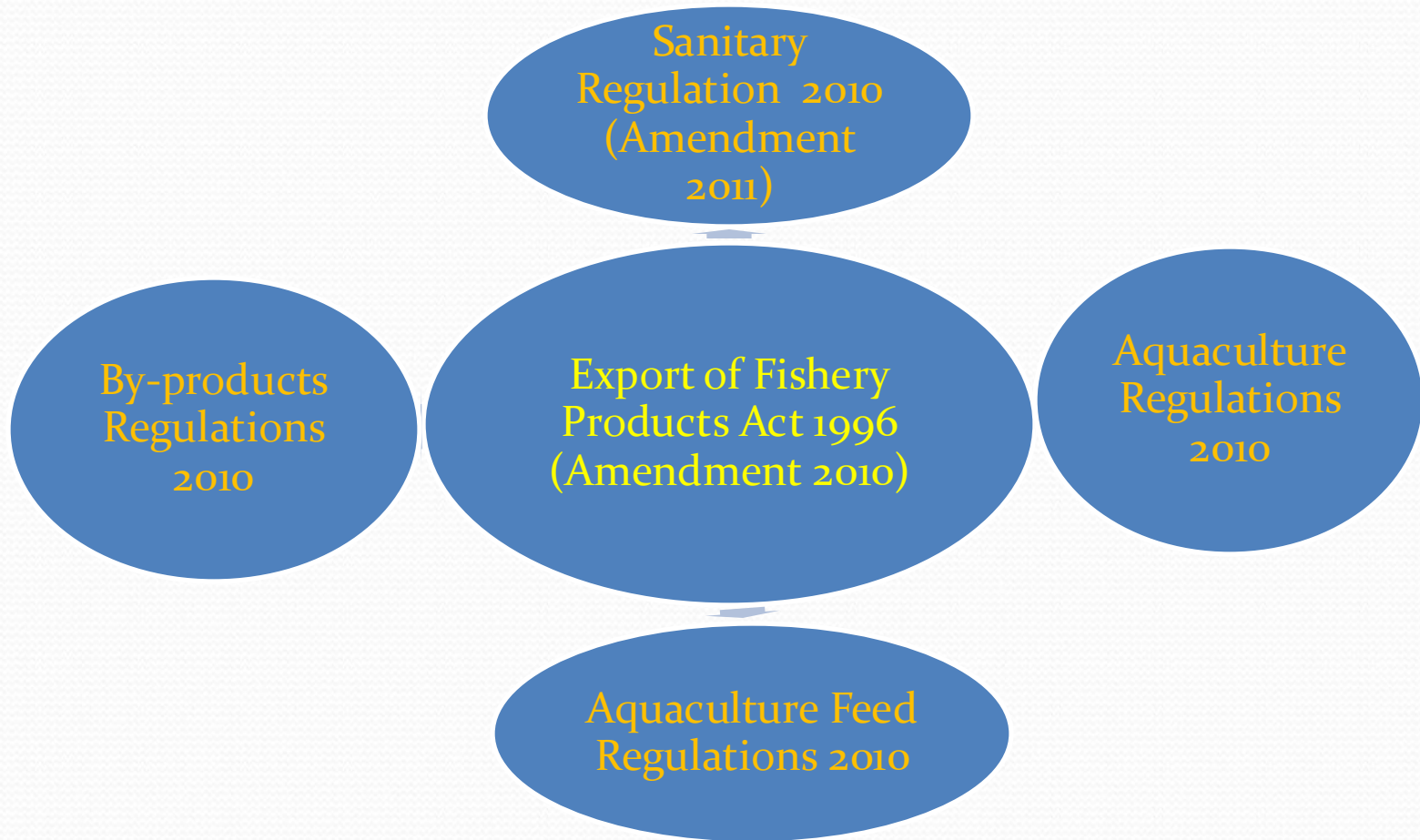
Major markets – Sri Lanka and Ivory Coast

# Legislative framework

- Seychelles enacted a bill '**Export of Fishery Products Act**' in 1996 establishing the Director of Veterinary Services as the head of the Competent Authority, provided power to authorized officers, setting conditions for issue export permits, withdrawal of export permit, etc.
- The Act contained only basic provisions and was not equivalent to EU Fishery Products sanitary legislations as well as Codex requirements for international trade in fishery products.
- In 1999, Seychelles was listed on the EU in regards of export Fishery products to EU.
- Implementaion of technical regulations were needed to organize official control by CA and cover all aspects of the industry for export purposes.

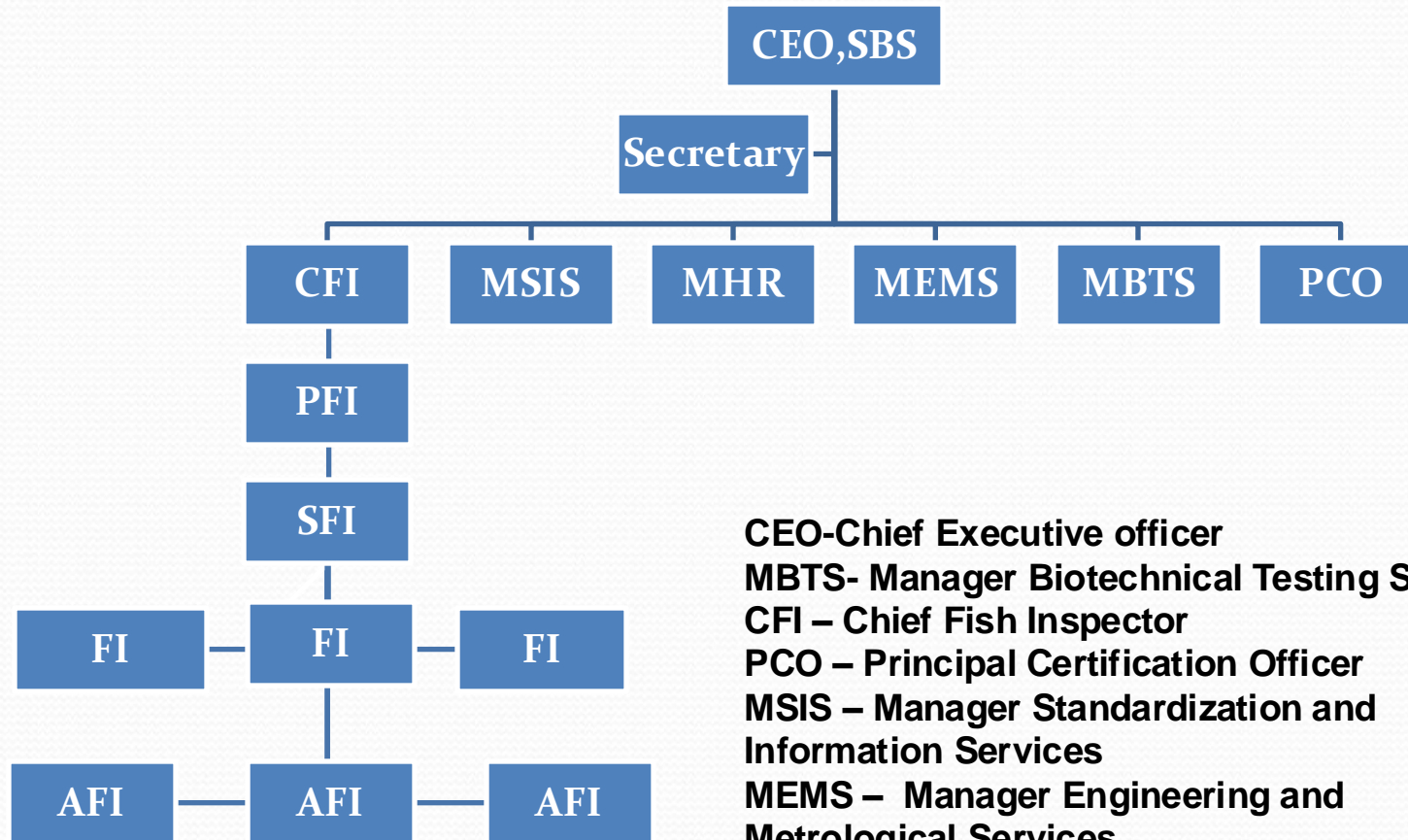


# Different Technical supports were involved within our unit (FIQCU)





# Structure of the Competent Authority



**CEO-Chief Executive officer**

**MBTS- Manager Biotechnical Testing Services**

**CFI – Chief Fish Inspector**

**PCO – Principal Certification Officer**

**MSIS – Manager Standardization and Information Services**

**MEMS – Manager Engineering and Metrological Services**

**MHR - Manager Human Resources**

# Summary of main challenges in Seafood Safety - Seychelles

- Control of Artisanal fishing vessels
- Handling of by catch species from purse seiners
- Overcrowding in port facilities
- Human resources, staff retention is difficult
- Dual usage of fish holds by some freezer vessels supplying tuna.



# Control of artisanal vessels

- Reg 853/2004 Annex III, Section VIII , Fishery Products, Requirements for vessels.
- All artisanal vessels registered with agreement number issued by CA.
- Annual in-depth inspection – issuance of Approval Certificate or Renewal of Certificate
- Structural design and size of vessels, insufficient to respect all hygiene norms.
- Continuous sensitization of the fish handlers to improve handling practices. E.g. use of clean rubber boots in fish holds, avoid rough handling of fish





## By-catch handling

- By catch constitute as high as 4% of total catch of purse seiners e.g. **1000 tons – 40 tons by-catch**
- Main by catch species are wahoo, rainbow runners, common dolphin fish, bonito
- Small quantity dry salted or dry frozen on board – larger portion are brine frozen with tuna
- The brine frozen - unhygienic handling during unloading and transportation
- Used mainly for pet food and fishing bait

# Handling and storage facilities- Port Victoria

- Port Victoria handle about 85% of tuna caught (approx 300,000 to 350,000 tons annually) in the Western Indian Ocean
- More than 30 EU purse seiners uses Victoria as their base. Berthing space is limited - overcrowding
- No stand alone cold storage facilities
- Sometime storage done on board reefer vessels





# Strategies to address the challenges

- Japanese grant – Extension to second designated artisanal port has been started(2016) – successfully accommodate unloading and mooring more fishing vessels.
- Government through SPA jointly is constructing a new industrial port facility which will include a cold storage, berthing space, bunkering facilities and better net repair facilities, etc.



# Strategies to address the challenges (cont..)

- HUMAN RESOURCES
- Staff are not fully qualified and need further training.
- Some staff do not possess relevant minimum qualification to attend to further training.
- There is a need to recruit qualified personnel

# Strategies to address the challenges (cont..)

- Maritime Training Centre has strengthen the module on HACCP, Fish Inspection/Food Hygiene to produce better trained potential fish processing technicians and fish inspectors
- Ministry committed to improve performance of the CA by providing resources to put in place an inspection system based on the requirements of **ISO 17020 Quality System**
- Ministry is continually assisting with capacity building (provide facilities and Qualified personnel)



# Strategies to address the challenges (cont..)

- Dual usage of fish holds by some freezer vessels supplying tuna.
- The CA has written all the parties in relevant about the mentioned issue
- The CA has started to implement the procedure.
- Eg. During Boat inspection, CA ensure that all its staff verify the fish hold and fuel usage system.
- The CA has already started to seal the dual usage of fish hold
- Any vessel does not comply with the procedure, the CA will deal with it.







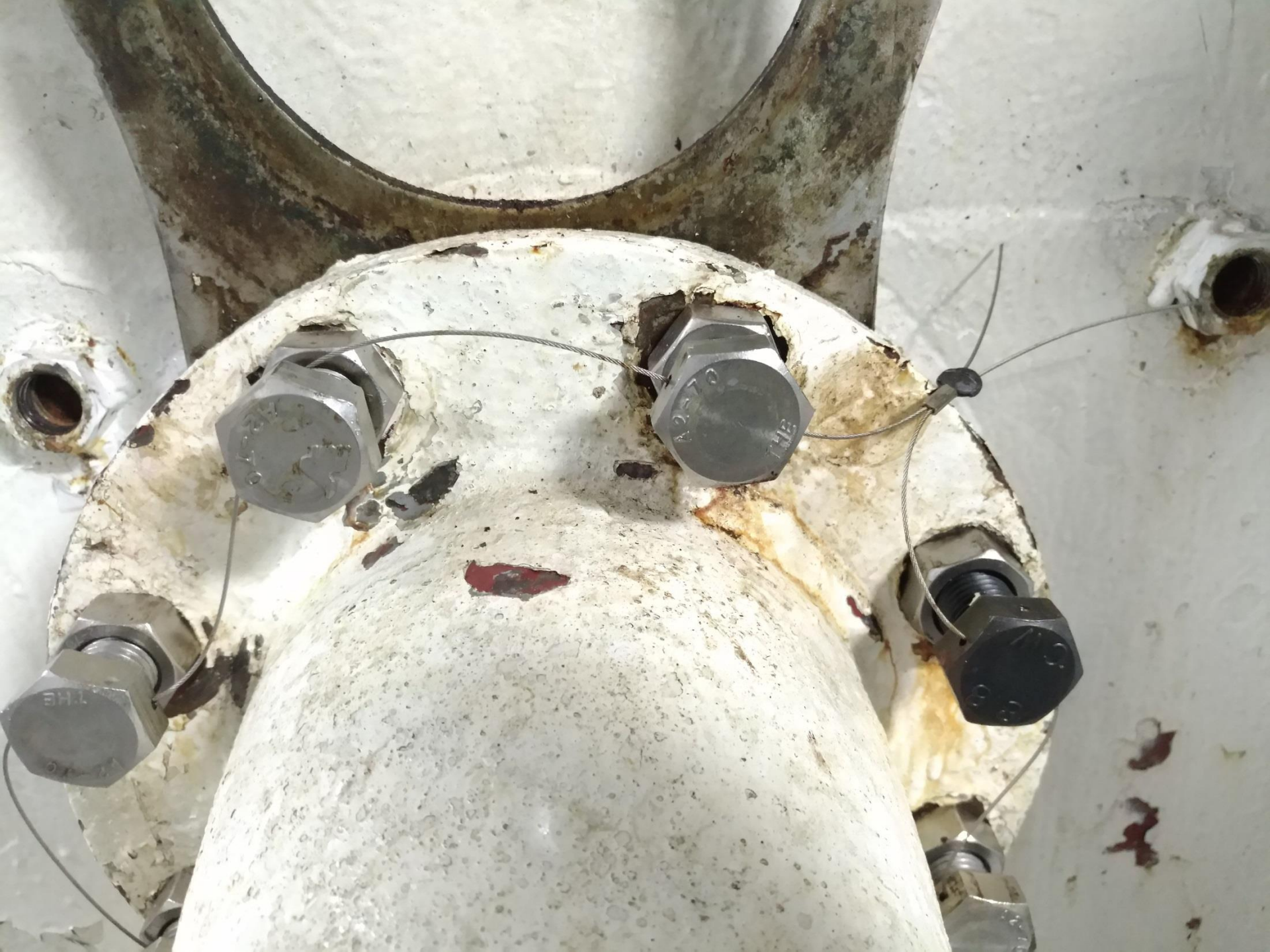














THANK YOU FOR YOUR  
ATTENTION